

事業区域面積 19.1353ha

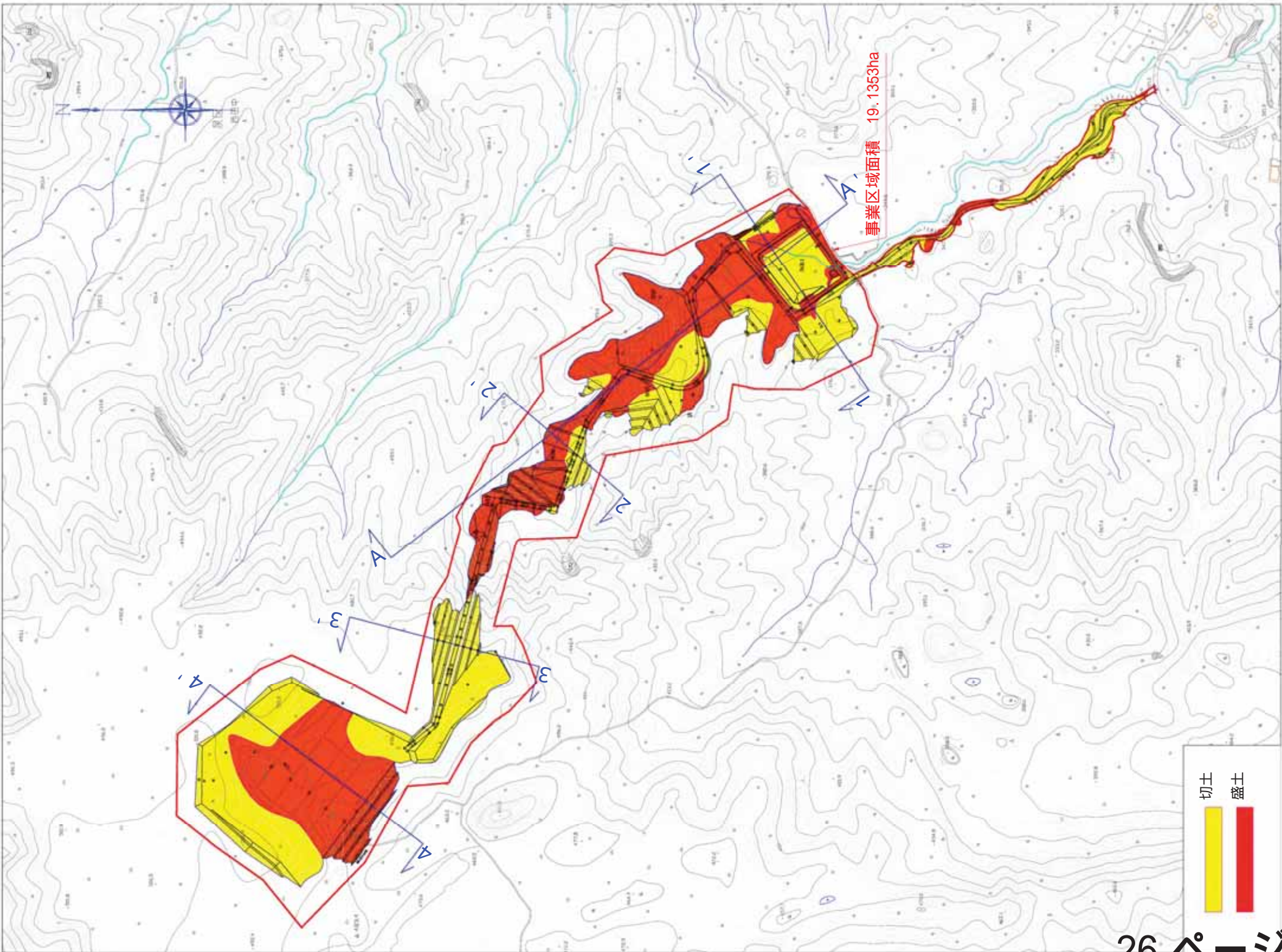
用途	面積	割合
平地	6.7705 ha	35.10%
Ⅰ級雑木林	0.2115 ha	1.08%
Ⅱ級雑木林	0.7626 ha	3.98%
Ⅲ級雑木林	0.4904 ha	2.56%
農地	0.4980 ha	2.62%
灌漑用池	0.4886 ha	2.56%
灌漑用池	0.2194 ha	1.15%
林道	0.1643 ha	0.86%
林道	7.7498 ha	40.87%
小計	19.1353 ha	100.00%

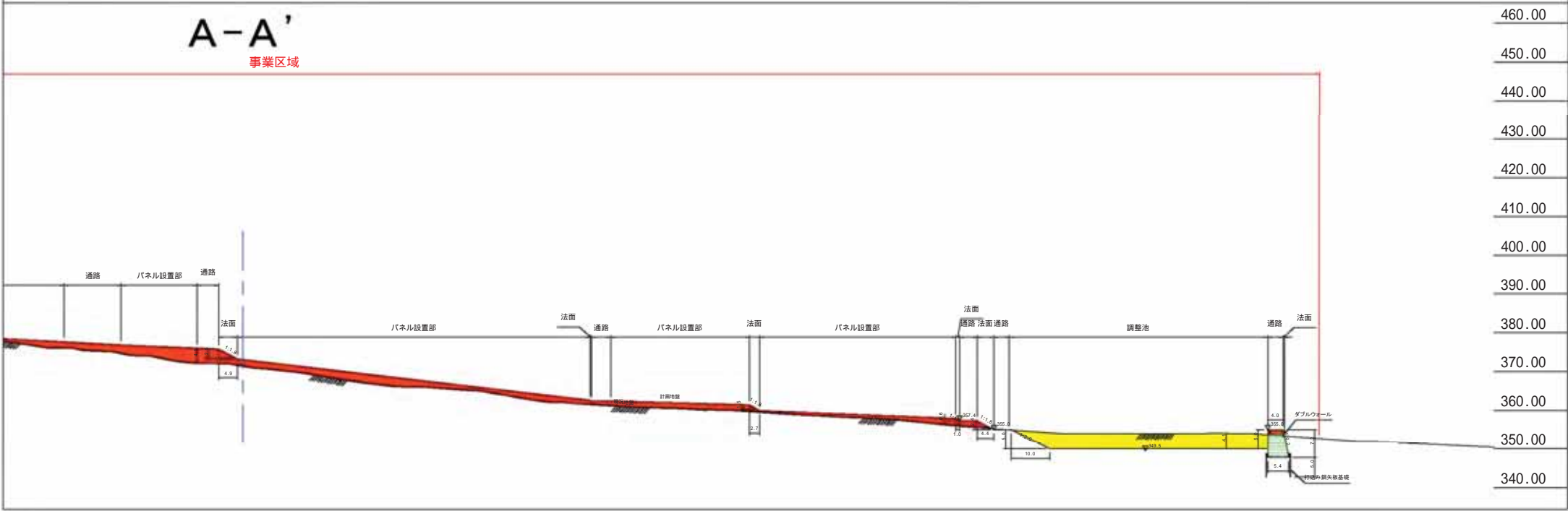
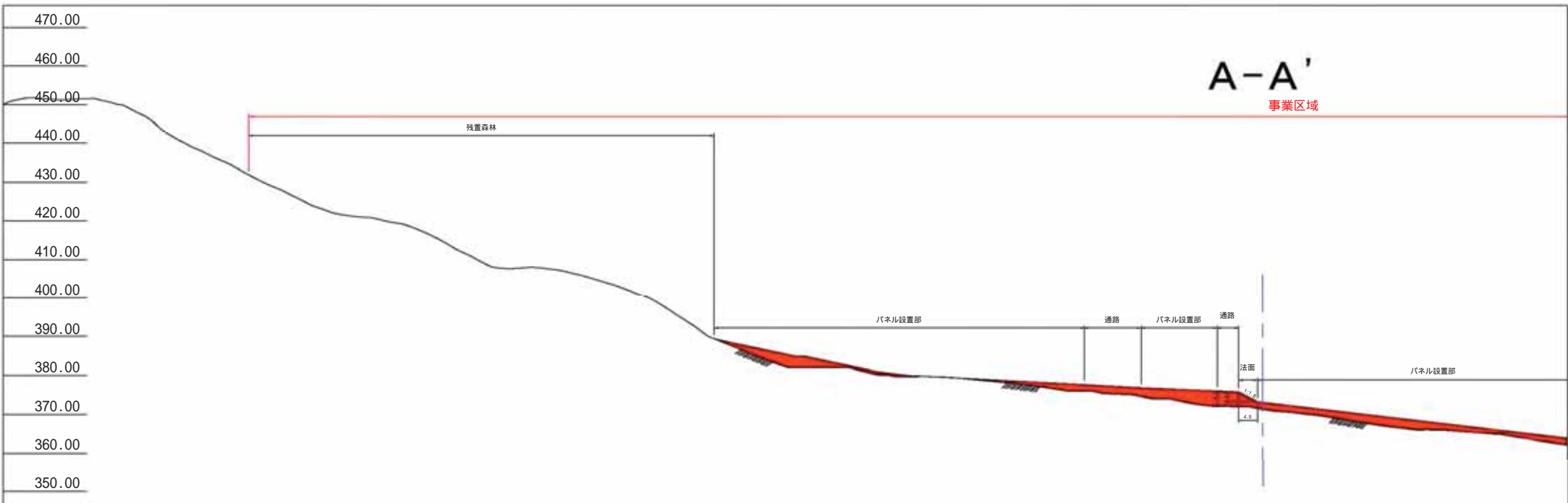
- 29箇所*4枚=116枚
- 28箇所*8枚=224枚
- 35箇所*12枚=420枚
- 30箇所*16枚=480枚
- 28箇所*20枚=560枚
- 23箇所*24枚=552枚
- 21箇所*28枚=588枚
- 27箇所*32枚=864枚
- 22箇所*34枚=748枚
- 515箇所*40枚=20,600枚
- 25,260枚*425w=10,735,500w

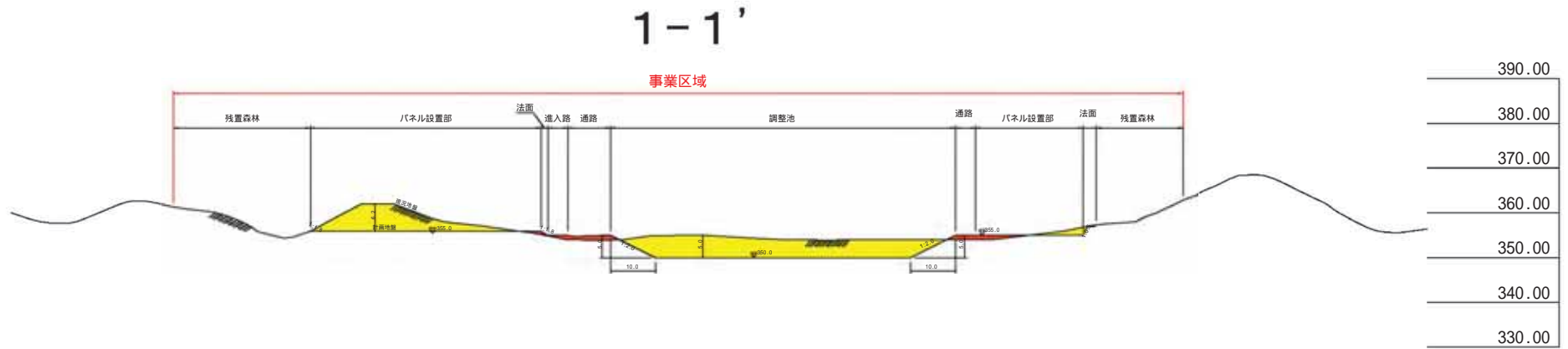
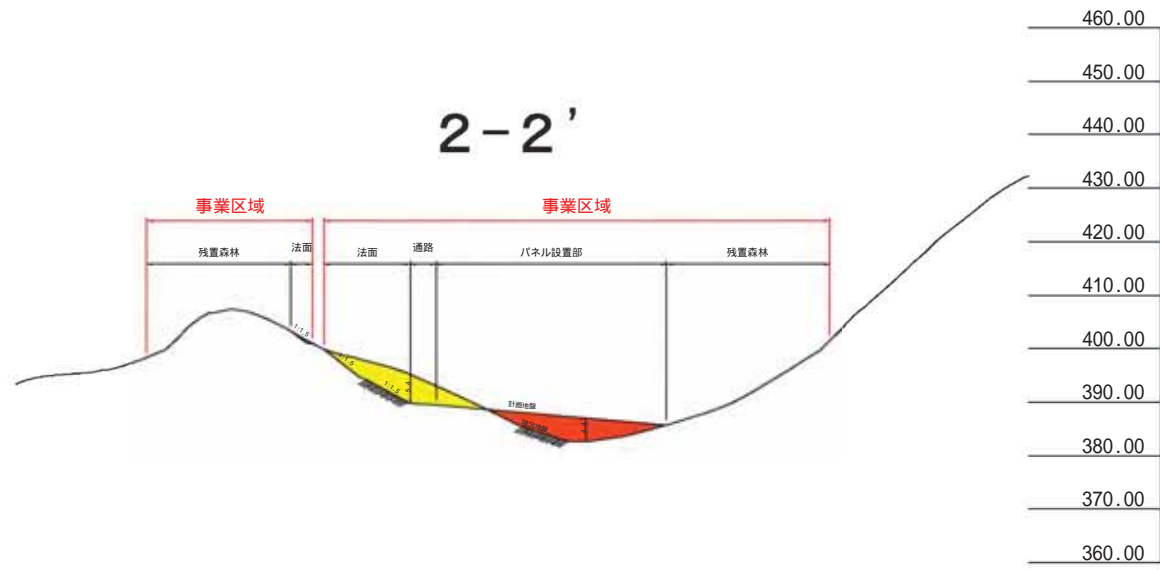


SG3400HW-W : 6.058mm x 2.438mm = 14.77㎡
 14.77㎡ x 3台 = 44.31㎡

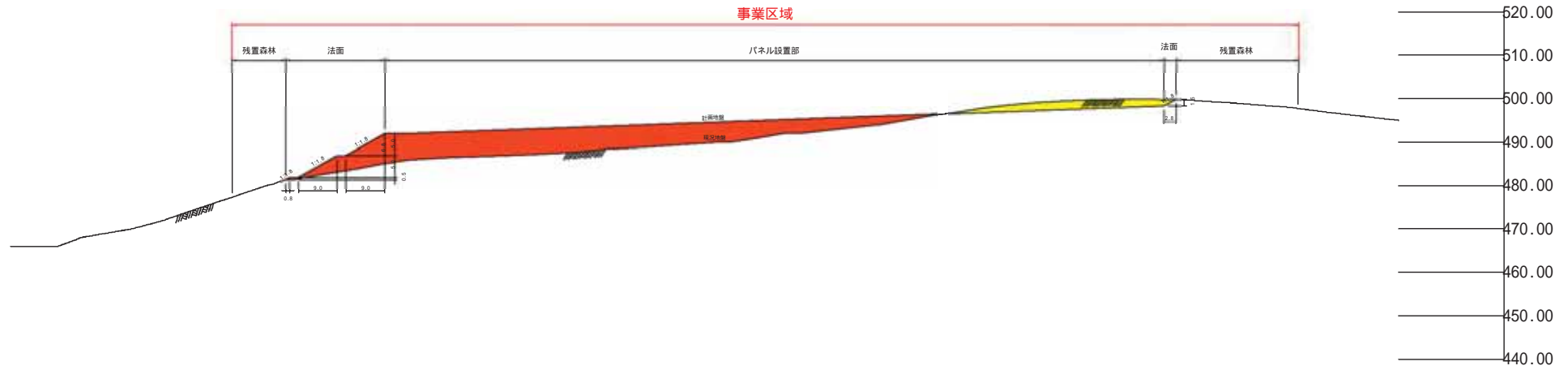




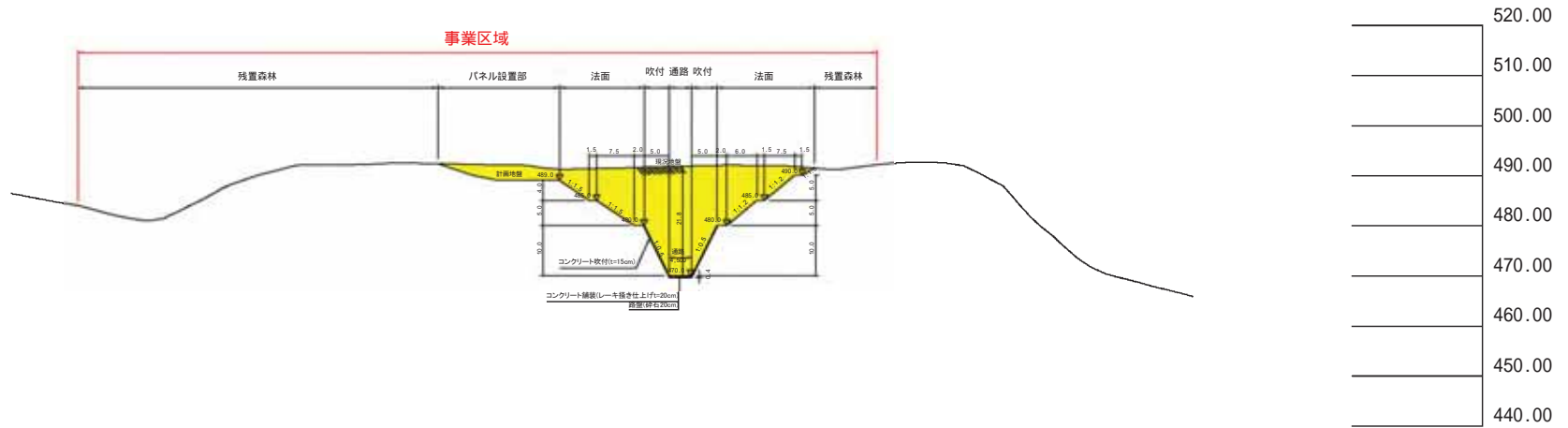




4-4'



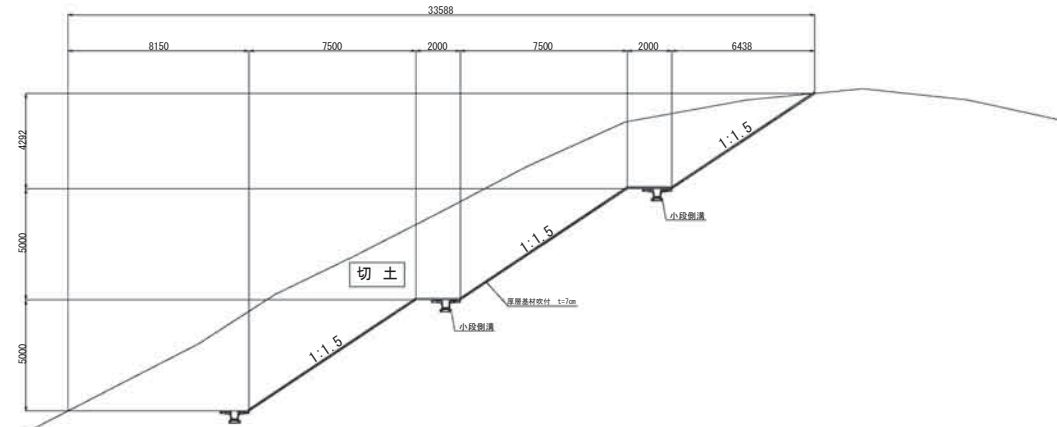
3-3'



標準断面図

(切土)

断面図 S=1:1,200

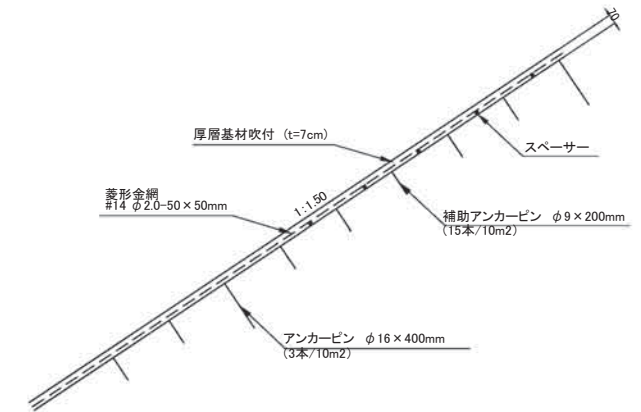
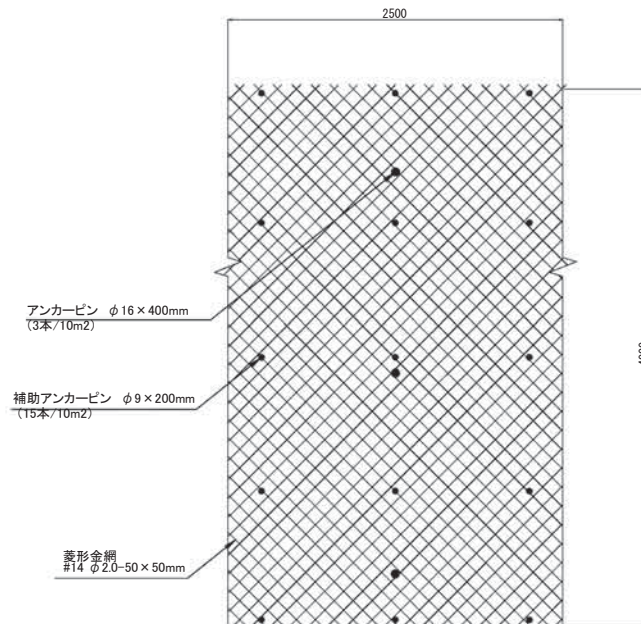


標準展開図

S=1:20

構造図

S=1:20



盛土法面築造断面図

